

# AROUND CAMPUS ONLINE

## News at a Glance

- Five Rocks guide SPSU planning for 2002-03. See story on page four.
- First women's basketball game starts the inaugural season with a win November 4.
- Dr. Julie Newell presented her research on the history of geology at the Geological Society of America's annual meeting in October.
- Dr. Carol Barnum was recognized as the top-rated presenter at the European Usability Professionals Conference held recently in London.
- Who's Who Among America's Teachers for 2002 honors SPSU's Bob Harbort, Briana Morrison, Ken Rainey, Barbara Thomas and Mark Vickrey.
- Architecture experts from around the world participated in a symposium on the influential Bauhaus design movement at SPSU in late October. The School of Architecture, Civil Engineering Technology and Construction hosted the event.
- SPSU will be profiled in the January issue of Georgia Trend magazine.

## 2002: YEAR OF ACADEMIC COLLABORATION

As 2002 comes to a close, SPSU can celebrate a year of achievements including new collaborations with other educational institutions throughout the state.

In Georgia there is growing interest in having universities bring four-year degree programs to the campuses of two-year colleges in the state. Such outreach programs benefit local residents and businesses, expanding the accessibility and affordability of higher education.

SPSU is active in this kind of outreach, having already established three collaborative degree programs and planning for more. Currently, SPSU offers a Bachelor of Information Technology at Floyd College in Rome; a Bachelor of Science in Information Technology at the Gwinnett Center; and an industrial engineering technology degree program with Middle Georgia College in Cochran. Plans are being developed for

additional agreements that enable Southern Polytechnic to take faculty and curriculum to communities whose residents and businesses do not have easy access to upper level education. The collaborations lead to more highly skilled local workforces and build new community leaders.

An exciting new collaborative concept is in the planning stages for cooperation between Middle Georgia College, Georgia Aviation Technical College and SPSU for a degree program in aviation management. Representative Terry Coleman has strong interest in SPSU's involvement in such a program and initial discussions have been held with President Rossbacher, Dean Ansley and Professor Jim McKee. An advisory board for the "Reach Up – Reach Out" program, composed of members of various components of the aviation industry, will first meet November 21.

## 81 PERCENT OF FACULTY AND STAFF SUPPORT SPSU IN RECORD-SETTING ANNUAL CAMPAIGN

As the reporting period ended October 31, faculty and staff had topped both their participation rate and their contributions over last year's faculty staff annual campaign. Last year, approximately \$43,000 was raised by 59 percent of campus. This year, the Octo-

ber 31 total was \$57,040.00 with a participation rate of 81 percent. Even though the reporting period is over, contributions are needed and will be welcomed through December 31. Every participant and every dollar supporting SPSU is deeply appreciated.

## NSF GRANT

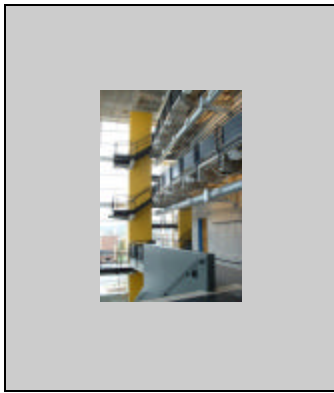
Dr. Patrick Bobbie, professor in the School of Computing and Software Engineering, has been awarded a three-year grant of almost \$383,000 from the National Science Foundation. Dr. Bobbie is principal investigator with co-investigators Brian Davis and Jennifer Uboh, faculty at Kennesaw Mountain and South Cobb High Schools. Under their direction, students at SPSU and both magnet high schools will have access to cutting edge research experience on campus.

The title of the program is "A Community-Based Partnership for Integrated Research and Education."

### From "Progress," the strategic planning report—SPSU Elevator Statement

"SPSU is one of the 34 campuses of the University System of Georgia, but we're one of only two that are designated as "special purpose" (the other is the Medical College.) We have a special statewide mission to educate students in science, engineering, technology and architecture. We focus on how to apply knowledge and use technology to solve real problems. We have terrific students, who have the third highest SAT scores in the University System. Employers love our graduates."

*For more information from the "Progress" report, please contact Melissa McGarity, in the Office of Planning and Assessment*



The American Institute of Architects – Georgia, has awarded two top honors to SPSU related projects. In all, fourteen winning projects were selected from 100 submissions. They were viewed by a jury chaired by Boston architect Graham Gund. An award of excellence was won by Heery International for the design of SPSU's new Architecture Building. An award of merit was given to SPSU Architecture Professor William Carpenter for the Reynoldstown Gateway Project.

**CONGRATULATIONS!**

## QUESTIONS AND ANSWERS: .....WHAT'S ON YOUR MIND?

In *Around Campus Online*, a regular column will answer questions related to Southern Polytechnic. Questions may be sent to *Around Campus* by e-mail (awatson@spsu.edu); by fax (Ext. 7321); or by campus mail (Attention Ann Watson, Public Relations Department.) It is NOT necessary to sign your name to submit a question. Questions will be answered in *Around Campus* by President Lisa Rossbacher or Vice President Sandy Pfeiffer or by a selected person knowledgeable about the subject.

*Ask what's on your mind.*

### **"ON MY MIND".....HOW WILL THE MONEY BE SPENT THAT IS RAISED IN THE FACULTY STAFF CAMPAIGN?**

The money raised by the annual faculty staff campaign supports Southern Polytechnic State University in several ways.

The entire amount will be used as a match toward our \$1M challenge grant in which an anonymous donor has pledged \$500,000 if we raise \$1 million in new money.

Unrestricted gifts will be used to fund the budget that has been allocated to the university schools/departments/programs/divisions.

Restricted funds donated or pledged will be added to the schools/departments/programs/divisions accounts as requested by the donors.

Participation rate and contributions from faculty and staff are also a tremendously supportive fund raising tool when approaching other individuals and companies, who want to know how the institution's own community is supporting its efforts.

*(Question answered by Patricia Garrett, executive director of Advancement)*

**KUDOS to every person in every department that reached 100% participation in the Faculty and Staff Campaign by Oct. 31.**

**100% DEPARTMENTS**

- Office of the President
- Academic Affairs, Office of the Vice President
- School of Architecture, CET & Construction, Office of the Dean.
- Construction Program
- School of Arts & Sciences, office of the dean
- Humanities & Technical Communication program
- Physics, Chemistry & Biological Sciences program
- Social & International Studies Program
- School of Computing & Software Engineering, Office of the Dean
- Undergraduate Computer Science
- Information Technology
- Apparel & Textile Engineering Technology program
- Extended University, Office of the Dean
- Extended University— Operations, Continuing Education, Center for Instructional Technology
- Advancement — Alumni, Development, Public Relations
- Student & Enrollment Services, Office of the Vice President
- Career & Counseling Services
- Residence Life & Judicial Services
- Student Affairs
- Student & Enrollment Services
- Business & Finance, Office of the Vice President
- Building Maintenance
- Physical Plant Administration
- Human Resources Office
- Procurement
- University Parking & Police
- Office of the CIO
- Academic Computing Support/Technical Support
- Tech Fee Instruction
- Georgia Youth Science & Technology Centers, State Headquarters

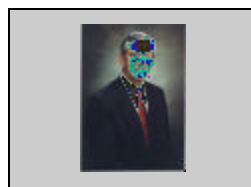
**NEW SIGNS MAKING THEIR DEBUT ON CAMPUS**

The first signs of new information are beginning to show up throughout the SPSU campus — quite literally. The Facilities Office has begun installing new directional and informational signage around campus that will soon make getting around SPSU an easier and much more attractive journey. The bright green and white signs will be posted to guide automobile traffic and will also be posted in pedestrian walkways between the buildings on campus. It is expected that completion of the installation will take place by the end of December.

**CHANCELLOR ANNOUNCES RE-ORGANIZATION**

Chancellor Thomas Meredith announced a new appointment at the University System Board of Regents Offices. Dr. Dan Papp is leaving Georgia to assume the post of

chancellor in the Florida State Higher Education School System. Frank Butler is the interim senior vice chancellor for Academic Affairs.



Chancellor Meredith

We're On the Web!

## Notable Dates

**Nov. 6:** Middle Georgia College guests on campus  
**Nov. 8:** Management Advisory Board on campus  
**Nov. 11:** Welcome speaker Bill Lusk to the graduate and capstone student dinner  
**Nov. 16 :** Undergraduate Open House  
**Nov. 19:** Lifesouth Blood Drive in the Student Center  
**Nov. 21:** Aviation Management Advisory Board on campus  
**Nov. 22:** Cobb County Science Olympiad on campus  
**Dec. 3:** Orientation  
**Dec. 4 & 5:** GYSTC Board of Directors and Regional Coordinators on campus.  
**Dec. 5:** SPSU faculty and staff holiday luncheon

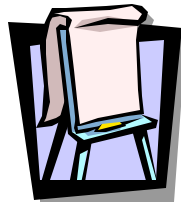


# FIVE ROCKS GUIDE SPSU GOALS: CAMPUS PLANS FOR THE FUTURE

The strategic planning process at Southern Polytechnic is driven by five special rocks – the five priority goals for Fiscal Year 2002-2003.

These rocks are:

- Viable Academic Programs
- Enrollment to support mission
- Strong customer service
- Private resources to support the university's mission
- A strong sense of place



To ensure that these goals will be reached with faculty, staff and student input, a senior staff member is assigned responsibility for each area. Their committees are re-searching the needs involved in each goal and putting together recommendations. Over the past few months, a series of meetings have been held on campus to provide for two way communication in planning and implementing the university's action plan.

Senior staff heading up the goals are: Sandy Pfeiffer, *Viable Academic Programs*; Ron Koger, *Enrollment to Support the Mission, and a Sense of Place*; Patrick McCord, *Strong Customer Service*; and Patricia Garrett, *Private Resources to support the Mission*.

Melissa McGarity, in the Office of Planning and Assessment, is producing a strategic planning report called *Polytechnic Progress* to address tasks and progress in the Five Rock program.

AROUND CAMPUS: ONLINE

